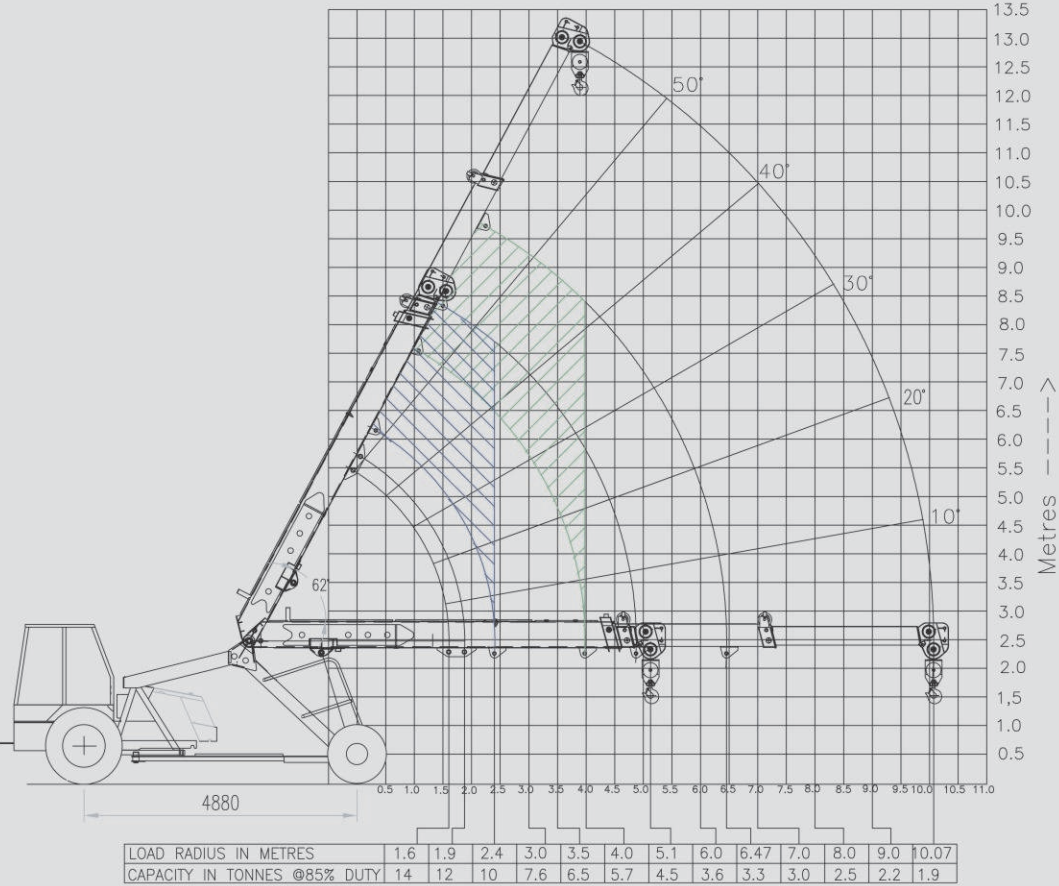


# **Load Chart- 14** (3 Part Slotted Boom)

LOAD CHART HYDRA-14  
(3 PART SLOTTED BOOM)



Plot No. 219, Sector-58, Ballabgarh, Faridabad (Haryana) - 121 004, INDIA  
Tel: +91-129-2306300, Fax: +91-129-2306463  
e-mail: exports.ece@escorts.co.in, Website: www.escortsece.com

Dealer Stamp / Address

# **HYDRA 14**



- 14T 3 Part
- Slotted Boom
- Rope Compensation
- Higher Winch Capacity

**PROVEN** **BEST-IN-CLASS** **STABLE**



# HYDRA 14

## Specifications

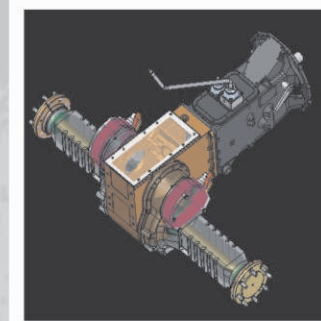
<b>RATED CAPACITY</b>	14T @ 1.6m radius 1.9T @ 10.07m radius
<b>ENGINE</b>	<b>Make &amp; Model</b> Escorts AE 4.286A-3A Four Cylinder, water-cooled Diesel Engine, developing 50 HP @2200 RPM or equivalent.
<b>TRANSMISSION</b>	<b>Drive</b> 2 Wheel Drive <b>Type</b> Heavy duty transmission developed especially for crane application. Constant Mesh gearbox coupled with straight drive axle. Eight forward and Two reverse speeds with High / Low selector lever. <b>Creep Speed</b> 2 km/hr, ideal for crane operation (laden) <b>Max. Speed</b> 29 km/hr (unladen) <b>Clutch</b> Single plate, heavy duty type
<b>STEERING</b>	<b>Type</b> Articulated power steering, hydraulically controlled through 2 double acting jacks. <b>Articulation</b> Up to 56 degree <b>Turning Radius</b> 6.5m
<b>BRAKES</b>	<b>Front Wheel</b> Pneumatic assisted hydraulic brakes. <b>Rear Wheel</b> Disc brakes actuated through a slave cylinder. <b>Parking</b> Hand operated mechanically actuated at rear wheels.
<b>TYRES</b>	<b>Front</b> 11.00x20-16PR (4 Nos.), inflation pressure 110-115 PSI <b>Rear</b> 13.00x24-12PR (2 Nos.), inflation pressure 35 PSI Water Ballasted
<b>TRACK</b>	<b>Front</b> 1930 mm (center of twin wheels) <b>Rear</b> 1680 mm (center of wheels)
<b>BOOM</b>	<b>Telescoping</b> 3part hydraulically powered & fully synchronized. <b>Type</b> Slotted boom with rope compensation. <b>Derricking</b> Through double acting Jacks.

<b>HOIST MECHANISM</b>	<b>Hoist</b> Hydraulic Winch. Six falls (winch capacity 12T) Rope dia 13 mm
<b>HYDRAULIC SYSTEM</b>	<b>Pump</b> Vane type Hydraulic Pump <b>Control Valve</b> 4 spool control valve with built inpressure relief valve and precision control. <b>Hydraulic Filter</b> Suction line has a 100 mesh inline strainer while return line has 25 microns full flow filter.
<b>ELECTRICAL SYSTEM</b>	<b>Type</b> 12V Single Battery, Negative earth
<b>CAPACITIES</b>	<b>Fuel Tank</b> 45 Ltrs. <b>Hydraulic Tank</b> 65 Ltrs.
<b>OPERATING WEIGHT (KG)</b>	<b>Gross Vehicle Weight</b> 11100 Kg
<b>OVERALL DIMENSIONS</b>	<b>Length</b> 11900 mm <b>Width</b> 2550 mm <b>Height</b> 3100 mm
<b>SAFETY SYSTEM</b>	Rope compensation for auto leveling Overload audio warning system Hose protection failure device Safety Brakes on Hoist Cylinder guard for protection
<b>STANDARD ACCESSORIES</b>	All weather cabin Front bumper Reflectors Lift cylinder guard Rear view mirror Turn & reverse lamp
<b>OPTIONAL ACCESSORIES</b>	Fly Jib Fire Extinguisher Spark Arrestor Air Condition Cabin Steering Wheel Safe Load Indicator Over Hoist & Overload Cutoff Heavy Duty Tyres on Rear Wheels



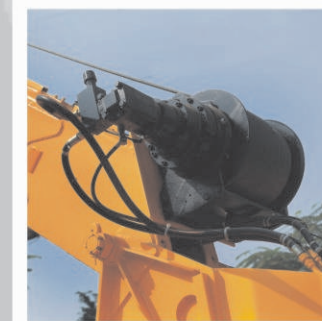
### Engine

Escorts engine BS-III (CEV compliant) – high on power/ torque & low on fuel consumption & maintenance.



### Transmission

Constant Mesh Transmission coupled with direct axle with 8F & 2R with better gear life and speed options. Can achieve top speed of 29 kmph and a creep speed of 2 kmph at rated rpm.



### Hydraulic Winch

of 12T capacity with 6 fall snatch block for precision handling & low maintenance.



### Rear Brakes

Disc Brakes in the rear for effective braking.



### Cabin

Ergonomically designed spacious Cabin with modern dashboard for utmost operator comfort & operation.



### Lift Cylinder Mounting

Lift Cylinders are mounted with adequate gap for better strength, stability & precision handling of loads.



### Slotted Boom & Rope

compensation for precision handling & auto levelling of loads.